

RUNG REPAIR KIT

ROUND RUNG: KIT # RPE35R

D-RUNG: KIT # RPE35D



ASSEMBLY

INSTRUCTIONS

CONTENTS: KIT # RPE35R

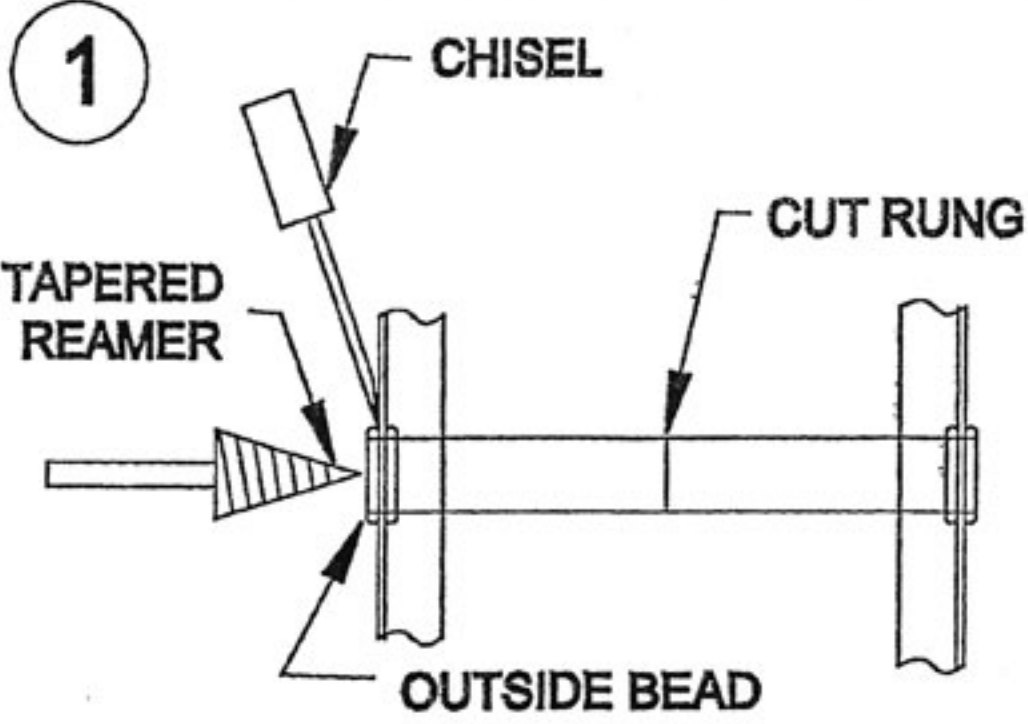
<u>QTY.</u>	<u>DESCRIPTION</u>
2	Inside bearing plates
1	Boss assembly
1	Round rung assembly
4	10-32 x $\frac{3}{4}$ long bolts
1	10-32 x $1\frac{3}{4}$ long bolts
5	10-32 lock nuts

CONTENTS: KIT # RPE35D

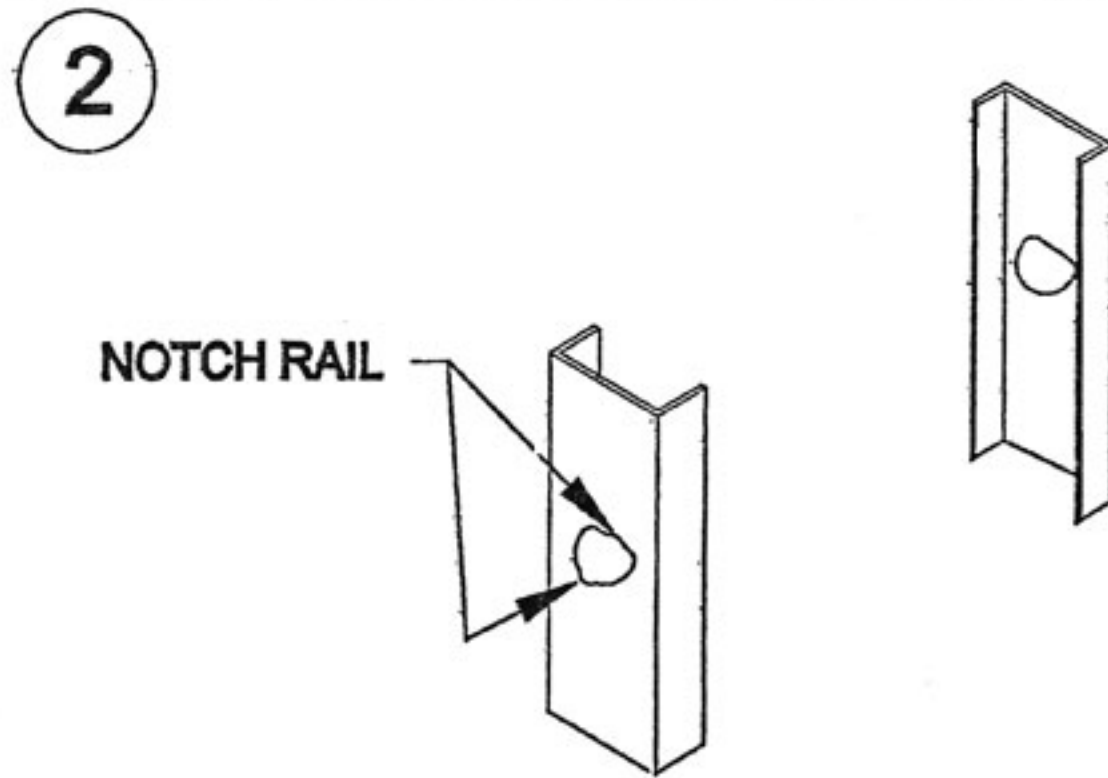
<u>QTY.</u>	<u>DESCRIPTION</u>
2	Inside bearing plates
1	Boss assembly
1	D- rung assembly
4	10-32 x $\frac{3}{4}$ long bolts
1	10-32 x $1\frac{3}{4}$ long bolts
5	10-32 lock nuts

Warning: This kit is for use only on Green Bull & Werner ladders with rungs attached directly to rails. If you need assistance please call Green Bull at 1-800-558-2855.

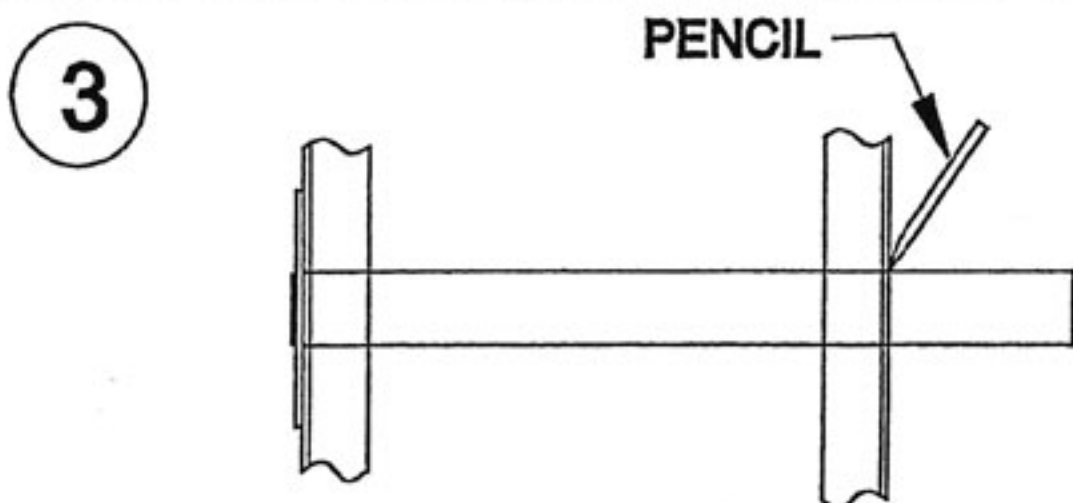
RUNG REPAIR KIT - ASSEMBLY INSTRUCTIONS



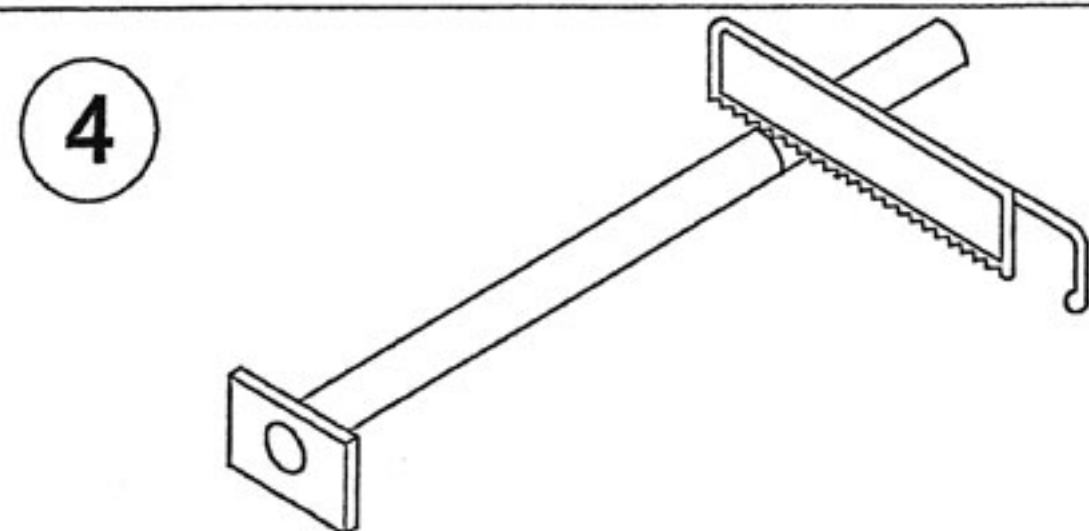
1 Cut damaged rung in half. Remove outside bead off each end of rung using a sharp chisel. On round rung models only, a tapered reamer can be used. Be careful not to damage rail. After beads are removed rung can be pulled out of the ladder.



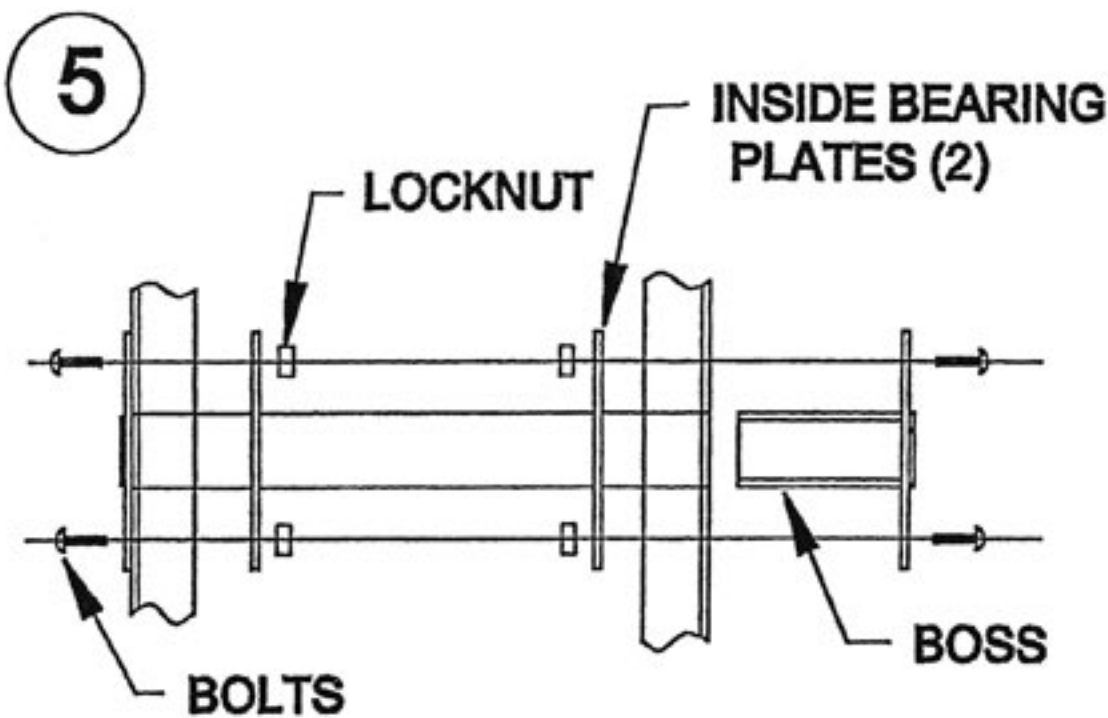
2 File notches in top and bottom of rung hole on the left hand rail to allow clearance for rivet on the replacement rung.



3 Insert new rung through left rail and mark rung length at the outside of the opposite side rail.



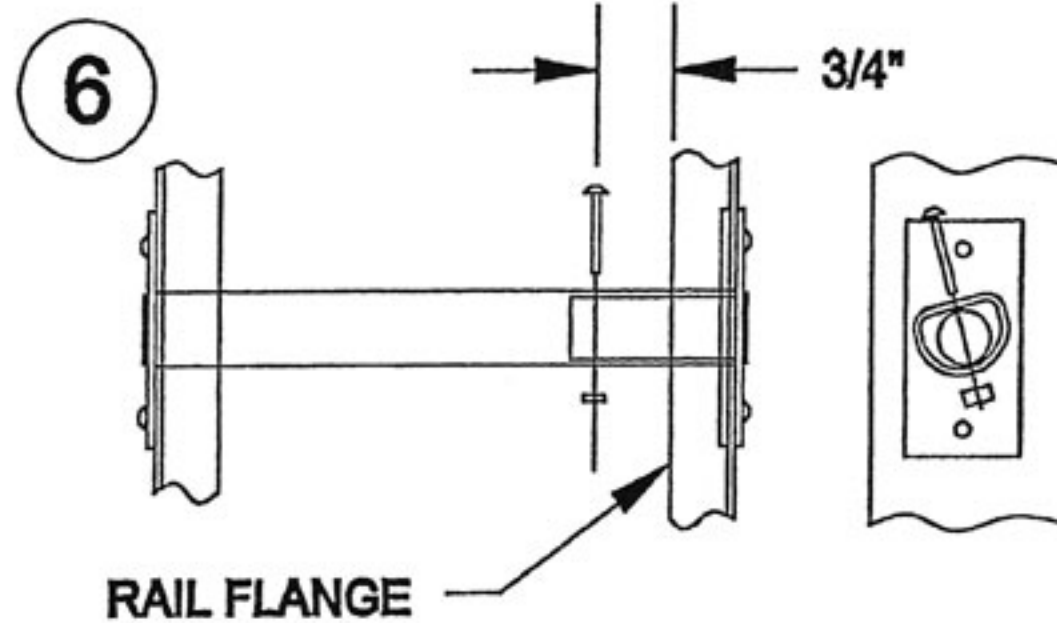
4 Remove rung from ladder and saw to length at mark.



5 Insert cut rung through rails placing (2) inside bearing plates on the rung between the rails. Align outside plate with rail and drill (2) 3/16" holes.

Slide one bearing plate against the drilled rail and attach with (2) 3/4" long bolts and locknuts.

Insert boss into other end, align plate and drill (2) 3/16" holes in rail. Slide the remaining bearing plate against the drilled rail and attach with (2) 3/4" long bolts and locknuts.



6 Measure over 3/4" from the inside edge of the rail flange and mark rung. Drill a 3/16" hole through the rung and boss as shown. Attach with 1 3/4" long bolt and locknut.

After the assembly is complete, extend and lower ladder to make sure it functions properly.

CAUTION

If replacing the fly rung that is located at the rungs, on some models the drilled hole may need to be located more than 3/4" from the rail to prevent interference with runglock operation.

Rev. 2
01/09