



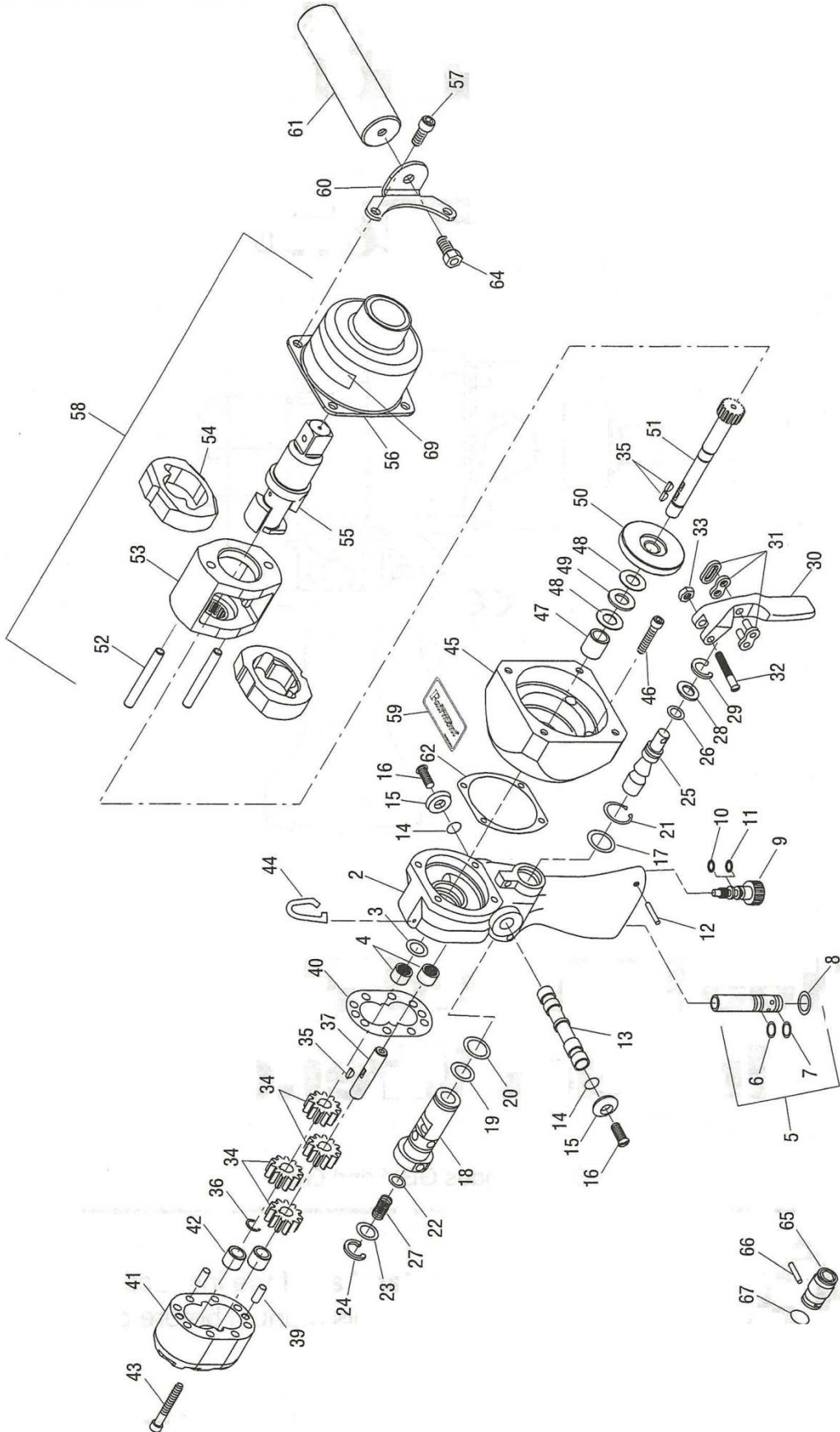
3/4" IMPACT WRENCH INSTRUCTIONS



REIMANN & GEORGER CORPORATION
CONSTRUCTION PRODUCTS
P/N 61-----

BUFFALO, NY
LE 8/11F

3/4" IMPACT WRENCH PARTS DIAGRAM



3/4" IMPACT WRENCH PARTS LIST

Key	Description	Qty	Key	Description	Qty
2	HANDLE ASSEMBLY with ORIFICE and BEARINGS	1	36	Retaining ring, 25/64 external	1
3*	O-ring, 1/2 x 3/32-90	1	37	Shaft, idler	1
4	Needle bearing	2	39	Dowel pin, 1/4 x 5/8	2
5	FLOW CONTROL CARTRIDGE	1	40*	Gasket	1
6*	O-ring, 1/2 x 1/16-70	1	41	MOTOR CAP ASSEMBLY	1
7*	O-ring, 7/16 x 1/16-70	1	42	Needle bearing	2
8	Retaining ring, 11/16 internal	1	43	Socket head cap screw, 1/4-20 x 1-3/4	8
9	Screw, adjustable torque output	1	44	Hook, lift	1
10*	O-ring, 1/4 x 1/16-70	1	45	Adapter	1
11*	Back-up ring	1	46	Socket head cap screw, 1/4-20 x 1-1/4	4
12*	Spring pin, 5/64 x 7/8	1	47	Bearing, needle	1
13	Spool, directional	1	48	Washer, thrust	2
14*	O-ring, 7/16 x 1/16-68	2	49	Bearing, thrust	1
15	Button	2	50	Spacer	1
16	Flat socket head cap screw, #10 x 1/2	2	51	Driveshaft	1
17*	O-ring, 7/8 x 1/16-70	1	52	Pin	2
18	Sleeve	1	53	Frame, hammer	1
19*	O-ring, .787 x .051-70	1	54	Hammer	2
20*	O-ring, 3/4 x 1/16-90	1	55	Anvil	1
21	Retaining ring, 7/8 external	1	56	Case, hammer	1
22*	O-ring, 7/16 x 3/32-90	1	57	Socket head cap screw, 5/16-18 x 3/4	4
23	Cap	1	58	Mechanism, 3/4 impact	1
24	Retaining ring, 3/4 internal	1	59	Decal	1
25	Spool, control	1	60	Bracket, handle mtg.	1
26*	O-ring, 5/16 x 1/16-70	1	61	Handle	1
27	Spring, compression	1	62*	Gasket	1
28	Washer	1	64	Hex head cap screw, 3/8-16 x 3/4	1
29	Retaining ring, 5/8 internal	1	65	Quick-change chuck, 5/8 hex (H6510A2 only)	1
30	Trigger	1	66	Pin, .199 x 1.25 (H6510A2 only)	1
31	Connecting link	1	67	O-ring, 1-1/4 x 1/8-70 (H6510A2 only)	1
32	Slotted round head machine screw, #10 x 1-1/4	1	69	Decal, warning	1
33	Hex elastic stop nut, #10	1			
34	Gear	4			
35	Kev. 1/8 x 3/8	3			
			*	Seal kit (includes items marked with an asterisk)	

Purpose of this Manual

This manual is intended to familiarize all personnel with the specifications and parts for the

3/4" Impact Wrench

Keep this manual available to all personnel.

Replacement manuals are available upon request at no charge.

Specifications

3/4" Impact Wrench

Type of Hydraulic System Open-Center or Closed-Center

Hydraulic Ports

Pressure 3/4-16 SAE O-Ring Boss

Tank 3/4-16 SAE O-Ring Boss

Output @ 22.7 l/min (6 gpm)

RPM (No Load) 2700

Torque 1900 Nm (1400 ft-lb)

Drive Size 3/4" Square Drive

Sound Power Level 85 L_{WA}

Mass/Weight 6.4 kg (14.1 lb)

Length 267 cm (10.5")

Width 95 mm (3.75")

Height 248 mm (9.75")

Hydraulic Power Source

⚠ WARNING

Do not exceed the following hydraulic power source maximums:

- Hydraulic flow: 45.4 l/min (12 gpm)
- Pressure relief: 138 bar (2000 psi)
- Back pressure: 13.8 bar (200 psi)

Failure to observe this warning could result in severe injury or death.

Type of Hydraulic System Open-Center or Closed-Center
Flow

Minimum 15.1 l/min (4 gpm)

Recommended 22.7 l/min (6 gpm)

Maximum 45.4 l/min (12 gpm)

Filtration 10 Micron (Nominal)

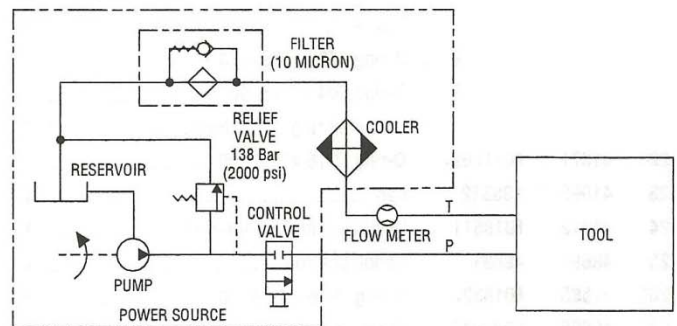
Pressure Relief Setting 138 bar (2000 psi)

Back Pressure (maximum*) 13.8 bar (200 psi)

* 13.8 bar (200 psi) is the maximum agreed standard back pressure for the HTMA (Hydraulic Tool Manufacturers Association).

1. Maximum hydraulic fluid temperature must not exceed 60 °C (140 °F). A sufficient oil cooling capacity is needed to limit the hydraulic fluid temperature.
2. Hydraulic flow must not exceed 45.4 l/min (12 gpm). Install a flow meter in the return line to measure the rate of hydraulic flow before using the tool.
3. Pressure relief valve setting must not exceed 138 bar (2000 psi) at your tool's maximum flow. Locate the pressure relief valve in the supply circuit to limit excessive hydraulic pressure to the tool.

Hydraulic Schematic



Recommended Hydraulic Fluids

Use any non-detergent, petroleum-based hydraulic fluid which meets the following specifications or HTMA specifications.

S.U.S. @:

38 °C (100 °F) 140 to 225

99 °C (210 °F) 40 minimum

Flash Point 170 °C (340 °F) minimum

Pour Point -34 °C (-30 °F) minimum